



**VAID's ICS** **DELHI**  
*Since 1985*

# **Anthropology**

## **PYQs**

**2013-2025**

**Created by: Antim N. Vaid**

**Affiliated by: Vaid Sir**

# ANTHROPOLOGY

## Comprehensive

# Classroom Course

*Taught by Real  
Anthropologists*

*300+ questions  
Prepared & Evaluated*

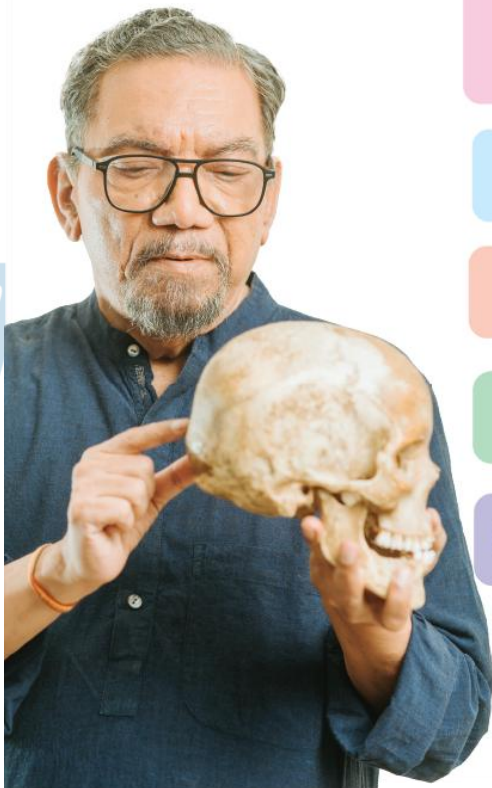
*Extensive Syllabus  
Coverage*

*Test Series Included*

*1-to-1 Mentorship*

*PYQ Integration*

*Course Validity: Life Time*



**www.vaidics.com**  
**953 800 1600**

# Anthropology UPSC CSE PYQ Compilation

## (2013-2025)

Note: The pointer from UPSC Anthropology Syllabus are displayed in bold, followed by the previous year questions

### Paper – 1

#### 1.1. Meaning, Scope and Development of Anthropology.

1. Anthropology provides a multidimensional understanding of human beings by bridging the gap between science and humanities. Elucidate. (20M/2025)
2. "Anthropology is the systematic, objective, and holistic study of humankind in all times and places." Elaborate the argument. (20M/2022)
3. Relevance of Anthropology. (10M/2018)
4. Define Anthropology. Describe the major branches of Anthropology elaborating on any one branch. (20M/2017)
5. Critically examine the role of anthropology in Contemporary India. (15M/2014)

#### 1.2. Relationships with other disciplines: Social Sciences, behavioural Sciences, Life Sciences, Medical Sciences, Earth Sciences and Humanities.

1. Elaborate the scope of anthropology and elucidate the uniqueness in the field of other social sciences. (20M/2021)
2. Differences between Social Anthropology and Sociology. (10M/2016)
3. Differentiate between Economics and Economic Anthropology. (10M/2013)
4. How do you situate Anthropology in Social Sciences? (10M/2013)

#### 1.3. Main branches of Anthropology, their scope and relevance:

- i. **Social-cultural Anthropology.**
- ii. **Biological Anthropology.**
- iii. **Archaeological Anthropology.**
- iv. **Linguistic Anthropology.**

1. "The agenda of biological anthropology became more scientific from the middle of the twentieth century." Justify. (15M/2025)
2. Scope and relevance of Social and Cultural Anthropology. (10M/2023)
3. Mention the major branches of linguistic anthropology and discuss language use in social and cultural settings. (15M/2021)
4. How can synergising the core branches of anthropology reinvigorate the holistic spirit of the discipline? (20M/2020)
5. Relationship between Linguistics and Social-Cultural Anthropology. (10M/2019)
6. Give an account of the field methods used in the study of Archaeological Anthropology. (15M/2018)
7. Archaeological Anthropology. (10M/2015)
8. Major subdivisions of Anthropology. (10M/2014)
9. Linguistic Anthropology. (10M/2013)

#### **1.4 Human Evolution and emergence of Man:**

- a) **Biological and Cultural factors in human evolution.**
  - b) **Theories of Organic Evolution (Pre Darwinian, Darwinian and Post-Darwinian).**
  - c) **Synthetic theory of evolution; Brief outline of terms and concepts of evolutionary biology (Doll's rule, Cope's rule, Gause's rule, parallelism, convergence, adaptive radiation, and mosaic evolution).**
1. Critically discuss the synergistic effect of biological and cultural factors in human evolution. (15M/2024)
  2. What is the hominization process? Discuss the major trends in human evolution with the help of suitable examples and illustrations. (20M/2023)
  3. Discuss the role of evolutionary forces in creating human diversity. (20M/ 2022)
  4. Explain the genetic mechanisms of micro and macro evolution. (15M/2021)
  5. Elucidate how Darwin and post-Darwin theories of evolution resulted in the development of the Synthetic theory of evolution. (15M/2020)
  6. Explain the biological changes that made human beings capable of making cultures. (20M/2018)
  7. Elucidate the biological and cultural factors in human evolution. (2016, 2015)
  8. Critically examine Darwin's theory of evolution in understanding evolution. (15M/2015)
  9. Discuss how Neo-Darwinism integrated the fields of Genetics and Evolution? (2013)

**1.5.Characteristics of Primates: Evolutionary Trend and Primate Taxonomy; Primate Adaptations; (Arboreal and Terrestrial) Primate Taxonomy; Primate Behaviour; Tertiary and Quaternary fossil primates; Living Major Primates; Comparative Anatomy of Man and Apes; Skeletal changes due to erect posture and its implications.**

1. Critically discuss the centrality of the African continent in the narrative of human evolution.(15M/2025)
2. Smell as a signal among non-human primates. (10M/2025)
3. Discuss different forms of primate social organisation. (15M/ 2022)
4. The losses and gains of erect posture. (10M/2021)
5. Jane Goodall's contributions in studying primate behaviour. (10M/ 2020)
6. Illustrate with examples the various types of locomotion pattern among non-human primates. (15M/2020)
7. Adaptive primate radiation. (10M/2019)
8. Discuss the evolutionary significance of bipedalism and erect posture. (20M/2019)
9. Bring out the comparative anatomical features of man and apes. Discuss their evolutionary significance. (15M/2017)
10. Explain the skeletal changes due to erect posture and their implications. (15M/2016)
11. Elucidate the skeletal differences between humans and chimpanzees. (15M/ 2014)
12. Role of Primatology in Anthropological studies. (10M/ 2013)

**1.6. Phylogenetic status, characteristics and geographical distribution of the following:**

- i. Plio-preleistocene hominids in South and East Africa—Australopithecines.
  - ii. Homo erectus: Africa (Paranthropus), Europe (Homo erectus (heidelbergensis), Asia (Homo erectus javanicus, Homo erectus pekinensis).
  - iii. Neanderthal man—La-chapelle-aux-saints (Classical type), Mt. Carmel (Progressive type).
  - iv. Rhodesian man.
  - v. Homo sapiens—Cromagnon, Grimaldi and Chancelade.
1. Write a note on Mousterian tool tradition, Mousterian culture and its makers.(15M/2025)
  2. Discuss the Miocene hominoid remains and their significance in evolution. (20M/2025)
  3. Osteodontokeratik culture and its makers. (10M/2025)
  4. Discuss the geographical distribution of Homo erectus. Taking into account its physical features, where does it fit in the human evolutionary line? (20M/2024)

5. Discuss major species of Australopithecus discovered from South and East Africa. Describe the discovery, physical features, and significance of Taung baby. (20M/2023)
6. Should we still distinguish between 'classic' and 'progressive' Neanderthals? Discuss the controversy surrounding Neanderthal's position in human evolution. (15M/2022)
7. What are the physical and cultural characteristics of Homo erectus? Discuss its phylogenetic status. (20M/2021)
8. Critically evaluate the contesting theories of the emergence and dispersal of modern Homo sapiens. (20M/2020)
9. "Europeans are closer to Neanderthals." Critically discuss in view of the African origin of humankind. (15M/2019)
10. Describe the culture related to Homo erectus. (15M/ 2018)
11. Write short notes on Rhodesian Man. (10M/2016)
12. Describe the salient characteristics & geographical distribution of Homo erectus. (15M/2015)
13. Asian Homo erectus. (10M/2014)

### **1.7 The biological basis of life: The Cell, DNA structure and replication, Protein Synthesis, Gene, Mutation, Chromosomes, and Cell Division.**

1. Gene expression. (10M/2023)

### **1.8. (a) Principles of Prehistoric Archaeology. Chronology: Relative and Absolute Dating methods.**

#### **(b) Cultural Evolution—Broad Outlines of Prehistoric cultures:**

- a. Paleolithic
- b. Mesolithic
- c. Neolithic
- d. Chalcolithic
- e. Copper-Bronze age
- f. Iron Age

1. Fission track dating method and its applications. (10M/2025)
2. Chronometric dating (10M/2024)
3. Identify the major Mesolithic sites and describe the typo-technological features with special reference to India. (15M/2023)

4. Discuss the Paleolithic environment, in light of available evidence with special reference to India. (15M/2023)
5. Prehistoric significance of Rakhigarhi. (10M/2023)
6. Cultural impact of Iron Age. (10M/2023)
7. Mesolithic rock art in Indian subcontinent. (10M/2022)
8. Enumerate the evidence of animal domestication in Indian microlithic industry. (15M/2022)
9. Thermoluminescence (TL) dating (10 M/2021)
10. Describe the features of early farming cultures and Neolithic of the Near East. (15 M/2021)
11. Discuss the salient features of different traditions of European Mesolithic. (15 M/2021)
12. Natufian culture. (10M/2020)
13. Differentiate between Lower Palaeolithic and Middle Palaeolithic culture with suitable examples. (15M/2020)
14. Olduvai Gorge. (10 M/2019)
15. Elucidate Mesolithic culture and associated rock art with examples from India. (15 M/2019)
16. Relative dating methods. (10 M/2019)
17. Discuss briefly the major traditions in the Upper Paleolithic cultures of Europe. (15 M/2019)
18. Give an account of the consequences of food production of Neolithic culture. (15 M/2018)
19. Describe the principles of radiocarbon dating. Mention its limitations. (15M/2018)
20. What are dating methods? Discuss one absolute method and one relative method in detail. (15M/2017)
21. Salient features of Mesolithic culture. (10M/2017)
22. Delineate the salient features of Chalcolithic cultures. (15M/2016)
23. Paleolithic Culture. (10M/2015)
24. Describe the absolute dating methods in Archaeology, highlighting the importance of each method. (15M/2014)
25. Give the broad outline of Palaeolithic culture emphasizing upon its tool technology. (20M/2013)
26. Carbon-14 method of dating. (10M/2013)
27. Upper Paleolithic in Europe (Test Nov24 07)

## 2.1. The Nature of Culture: The concept and Characteristics of culture and civilization; Ethnocentrism vis-a-vis Cultural Relativism.

1. Critically examine the drawbacks in assuming culture as an 'integrated-closed system in understanding of contemporary society. (15M/2025)
2. Culture and embodiment. (10M/2025)
3. Critically examine Arjun Appadurai's conceptualization of the global cultural economy. (20M/2024)
4. Write notes in about 150 words: William Ogburn and Cultural lag. (10M/2024)
5. Attributes of culture. (10M/2024)
6. Discuss the historical and cultural contexts that led to superseding ethnocentrism with cultural relativism in anthropology. (15M/2023)
7. Human rights and Cultural relativism (10M/2022)
8. Cultural Relativism. (10M/2020)
9. Discuss the development of the concept of culture in Anthropology. (2019)
10. Cultural Relativism. (10M/2017)
11. Why has the concept of Cultural Relativism been so dear to anthropologists? (15M/2014)
12. Bring out the distinguishing features of culture and civilization. (15M/2013)

## 2.2. The Nature of Society: Concept of Society; Society and Culture; Social Institution; Social groups; and social stratification.

1. Examine critically the concept of social stratification as a basis for sustaining social inequality. (20M/2024)
2. Radcliffe-Brown's ideas on status, role, and institution. (10M/2023)
3. Write a note in about 150 words: Radcliffe-Brown's ideas on status, role, and institution. (10M/2022)
4. Critically evaluate different types of social stratifications with suitable examples. (20M/2021)
5. Discuss Erving Goffman's concept of total institutions and its relevance in contemporary society. (15M/2020)
6. Discuss social stratification according to any three major approaches. (20M/2019)
7. Society and Culture. (10M/2015)

8. Define Status and Role. Distinguish between Ascribed and Achieved Status. (15M/2014)

## 2.3 MARRIAGE

1. Discuss the role of marriage regulations in traditional societies in India for strengthening social solidarity. (20M/2024)
2. Marriage Regulations and Alliance Theory. (10M/2021)
3. Ways of Acquiring Mate in Tribal Society. (10M/2018)
4. Discuss the different forms of preferential marriage with suitable examples from tribal societies in India. (15M/2017)
5. Incest Taboos. (10M/2015)
6. Define marriage and describe the various types of marriages in human societies. (15M/2014)
7. Where do you situate 'live-in relationship' within the institution of marriage? (15M/2013)

## 2.4 FAMILY

1. Define urbanization and discuss its impact on family in India with examples. (15M/2024)
2. Write a note in about 150 words: Household and domestic group. (10M/2022)
3. Explain the impact of the feminist movement on the universality of marriage and family structure. (20M/2020)
4. Discuss the impact of urbanization and feminist movements on families in India. (20M/2016)
5. Define family and critically examine the universality of family. (15M/2015)
6. Discuss the impact of urbanization and the feminist movement on family. (15M/2013)
7. Is family a social institution? (10M/2012)

## 2.5 KINSHIP

1. Theoretical significance of Purum kinship-system. (10M/2025)
2. Critical perspective on avoidance and joking relationship. (10M/2024)

**Are You a Beginner for  
UPSC & Anthropology?**

**Fresh Look at  
Anthropology  
Syllabus**



Scan to Watch  
the Video

3. Critically discuss A.L. Kroeber's contribution to kinship studies. (15M/2023)
4. Discuss how the rules of descent contradict the principles of residence in matrilineal society, mentioning suitable examples. (20M/2022)
5. Write notes on: Descent Groups. (10M/2021)
6. Kinship Terminology. (10M/2018)
7. Elucidate the determinants of Kinship terminology. (15M/2017)
8. Bilineal and Bilateral descent. (10M/2017)
9. Describe the cardinal points of descent and alliance theories. (20M/2016)
10. Lineage and Clan. (10M/2016)
11. Double Descent. (10M/2014)
12. Various types of descent. (10M/2013)

### 3. ECONOMIC ORGANIZATION

1. Cultural relevance of the Kula. (10M/2024)
2. Discuss the impact of globalization on the economic systems of indigenous communities. (15M/2023)
3. Critically examine various anthropological interpretations about the Kula Ring. (15M/2022)
4. Write a note in about 150 words: Debate between formalist and substantivist approaches. (10M/2022)
5. Write notes on Modes of Subsistence. (10M/2021)
6. Discuss how indigenous people encounter globalization. (20M/2019)
7. Pastoralism in India. (10M/2019)
8. Write the characteristics of the hunting and gathering economy. (15M/2018)
9. With the help of appropriate examples, explain the various forms of the exchange system. (15M/2017)
10. Discuss the principles governing production, distribution, and exchange in simple societies. (20M/2016)
11. Critically examine the Formalists and Substantivists' views on the applicability of economic laws in the study of primitive societies. (20M/2015)
12. Horticulture. (10M/2015)
13. Discuss the impact of globalization on tribal economy. (20M/2013)

### 4. POLITICAL ORGANIZATION AND SOCIAL CONTROL

1. Authority and forms of political organization. (10M/2024)

2. Discuss the mechanism of social control in different kinds of political systems. (20M/2022)
3. Discuss different forms of primate social organization. (15M/2022)
4. How do political organizations of simple societies establish power, authority, and legitimacy? (20M/2021)
5. How is the construct of power linked to the notion of conspicuous consumption and its impact on distributive justice? (15M/2020)
6. How does customary law function in tribal society? Discuss its different sources. (15M/2018)
7. Mention the characteristic features of a band with suitable examples. (15M/2017)
8. Discuss different social control mechanisms in simple societies. (15M/2016)
9. Differentiate between State and Stateless Societies. (10M/2014)
10. Discuss the nature of Law and Justice in simple societies citing suitable examples. (20M/2014)

## 5. RELIGION

1. How did Clifford Geertz look at religion? Differentiate between anthropological and psychological approaches to the study of religion. (15M/2023)
2. Write a note in about 150 words: Shaman, sorcerer, and medicine man. (10M/2022)
3. Write notes on Animism and Deep Ecology in about 150 words. (10M/2021)
4. Critically explain the anthropological approaches to religion. (15M/2019)
5. Difference between Science and Magic. (10M/2018)
6. Discuss the different traditional forms of religion in tribal societies. (2017)
7. Difference between religion and magic. (10M/2017)
8. Critically examine different Anthropological approaches to religion. (2016)
9. Totemism. (10M/2016)
10. How do you relate the concepts of 'Sacred' and 'Profane' in Durkheim's theory of religion with a focus on the role of the totem? (15M/2015)
11. What is understood by 'Rites of Passage'? Describe the various phases of the 'Rites of Passage' and their significance. (20M/2014)
12. How does taboo serve as a means of social control? (15M/2013)
13. Totemism. (10M/2013)

## 6. ANTHROPOLOGICAL THEORIES

### a) Classical evolutionism

1. How the study of variation in forms of marriage led to rethinking on the concepts of social reproduction, kinship and family? (20M/2025)

2. Critically examine James Frazer's theory of evolutionism. Elucidate the place of religion in modernity. (15M/2025)
3. Critically evaluate Lewis Morgan's classification of family. (15M/2021)
4. How did Morgan explain the evolution of marriage, family and Socio-Political organization and how did other evolutionists disagree with his explanation? (20M/2015)

### **b) Historical particularism; Diffusionism**

1. Discuss historical particularism as a critical development to classical evolutionism. (20M/2024)
2. Historical Particularism and Franz Boas. (10M/2021)
3. How do diffusionism and evolutionism differ as explanations of Cultural Change? (15M/2015)
4. Historical Particularism. (10M/2015)

### **c) Functionalism; Structural functionalism**

1. How did Radcliffe-Brown and Levi-Strauss study kinship in terms of social structure? (15M/2019)
2. Basic tenets of structural-functionalism. (10M/2017)
3. Functionalism. (10M/2016)
4. What is functionalism? Discuss the functional approach to the understanding of Religion. (20M/2014)
5. In what ways is Functionalism different from Structural Functionalism? (20M/2013)

### **d) Structuralism**

1. How does Lévi-Strauss look at the Tsimshian myth of Asdiwal? Critically discuss Lévi-Strauss' theory of structuralism in the light of his study of mythologies. (15M/2024)
2. Explain the structural analysis of kinship as proposed by Lévi-Strauss. (15M/2021)
3. How do the concepts of binary opposite and exchange figure in Levi-Strauss' structural analysis of Kinship? (15M/2016)

### **e) Culture and personality**

1. Critically discuss the characteristics of the psychological types in the cultures of the American South-West as observed by Ruth Benedict. (20M/2024)

2. Critically discuss the controversies related to fieldwork of Bronislaw Malinowski and Margaret Mead. (20M/2023)
3. Discuss political and methodological aspects of national character studies. Elucidate the contemporary relevance of such studies. (15M/2023)
4. Discuss various anthropological approaches to the study of personality and culture. (20M/2020)
5. What do you understand by the National Character Study? Illustrate the concept. (15M/2018)
6. Explain Ruth Benedict's patterns of culture. (20M/2017)

#### **f) Neo evolutionism**

1. Discuss the approaches of Leslie White, Julian Steward, and Marshall Sahlins in the light of cultural evolution. (15M/2022)
2. Gordon Childe's Theory of Cultural Evolution. (10M/2018)
3. Critically examine the Stewardian view of neo-evolutionism. (15M/2017)

#### **g) Cultural materialism**

1. Cultural Materialism. (10M/2019)

#### **h) Symbolic and interpretive theories**

1. Compare and contrast the symbolic approaches of Clifford Geertz and Victor Turner to understand culture. (15M/2025)
2. Elucidate the concept of "thick description" of Clifford Geertz with a suitable example. (15M/2021)
3. Victor Turner and Liminality. (10M/2020)
4. Examine critically the contributions of Victor Turner and Clifford Geertz in anthropology. (20M/2019)
5. According to Geertz, how does the cockfight reveal aspects of Balinese culture? (15M/2016)
6. What made Geertz's Interpretive Anthropology distinct from Turner's symbolic anthropology? What does each of them mean by the terms 'Symbol' and 'Symbolic'? (25M/2015)
7. Bring out the contribution of Turner and Geertz in symbolic and interpretive theories in Anthropology. (15M/2013)

**i) Cognitive theories**

**j) Post- modernism in anthropology**

1. How the theories of postmodernism are relevant in promoting social justice and empowerment of marginalised communities? (20M/2025)
2. Critically explain the notion of 'deconstruction' in the light of the postmodern works of Jacques Derrida. (20M/2024)
3. Explain the basic features of 'Postmodernism' in Anthropology. (20M/2015)

**7. Culture, language and communication: Nature, origin and characteristics of language; verbal and non-verbal communication; social context of language use.**

1. Describe briefly the theoretical perspectives in linguistic anthropology to explain the relationship of culture, language and thought. (15M/2025)
2. Write notes in about 150 words: Glottochronology. (10M/2023)
3. Explain how variations in language usage are related to social inequality. (20M/2020)
4. Sapir-Whorf hypothesis. (10M/2020)
5. Critically examine that the structure and content of language are influenced by culture. (15M/2018)
6. Non-verbal communication. (10M/2017)

**8.1 Research methods in Anthropology: Fieldwork tradition in Anthropology**

1. Discuss the contemporary challenges in fieldwork method in anthropological research. (15M/2024)
2. Write the historical development of fieldwork tradition in anthropology till recent times. (15M/2022)
3. Experiential Ethnography. (10M/2020)
4. Elucidate the basic characteristics of anthropological fieldwork methods. (15M/2017)
5. Describe the evolution of fieldwork tradition in Anthropology. (15M/2016)
6. Fieldwork tradition in Anthropology. (10M/2014)

**8.2 Research methods in Anthropology: Distinction between technique, method and methodology**

1. Discuss the applicability of various sampling techniques in selecting the study group. (15M/ 2024)

### **8.3 Research methods in Anthropology: Tools of data collection: observation, interview, schedules, questionnaire, Case study, genealogy, life-history, oral history, secondary sources of information, participatory methods.**

1. Multispecies, Multi-sited and Critical Ethnography. (10M/2025)
2. Discuss various tools of data collection in conducting anthropological research. (20M/2021)
3. Evaluate participant observation in producing anthropological knowledge. (15M/2019)
4. Discuss phenomenology as a research method in anthropological studies. (15M/2019)
5. How is case study method helpful in understanding social phenomena ? Explain with suitable examples. (20M/2018)
6. Questionnaire. (10M/2017)
7. Genealogical Method. (10M/2014)
8. Discuss the relevance of Case Study method of data collection. (15M/2013)

### **8.4 Research methods in Anthropology: Analysis, interpretation and presentation of data.**

1. How have interpretation and presentation of data changed from classical to contemporary writings in anthropological texts? (15M/2020)
2. Describe various methods of qualitative data analysis. Highlight some popular computer softwares used in qualitative analysis. (20M/2023)

### **9.1 Human Genetics: Methods and Application: Methods for study of genetic principles in man-family study (pedigree analysis, twin study, foster child, co-twin method, cytogenetic method, chromosomal and karyo-type analysis), biochemical methods, immunological methods, D.N.A. technology and recombinant technologies.**

1. Heritability and its estimation (10M/2024)
2. What is meant by karyotype? How does its analysis help in the diagnosis of chromosomal aberrations in man? (20M/2024)
3. Pedigree analysis in genetic counselling. (10M/2022)
4. Briefly describe the various methods used in the genetic study of man. (20M/2017)

5. What do you understand by Immunogenetics? Explain with suitable examples. (15M/2015)
6. Twin method in human genetics (10M/2013)

## 9.2 Mendelian genetics in man-family study, single factor, multifactor, lethal, sublethal and polygenic inheritance in man.

1. Mendelian and non-Mendelian traits. (10M/2025)
2. Lethal and sublethal genes (10M/2024)
3. What is a multifactorial trait? Illustrate your answer with suitable human examples. (15M/2024)
4. Polygenic Inheritance. (10M/2023)
5. Categorize Genes that influence Human Survival. (10M/2018)
6. Critically discuss the Mendelian principles and their application to human populations. (15M/2016)

## 9.3 Concept of genetic polymorphism and selection, Mendelian population, Hardy Weinberg law; causes and changes which bring down frequency – mutation, isolation, migration, selection, inbreeding and genetic drift. Consanguineous and nonconsanguineous mating, genetic load, genetic effect of consanguineous and cousin marriages.

1. Mitochondrial DNA and human evolution. (10M/2025)
2. What assumptions must be met for a population to be in genetic equilibrium? Explain the importance of genetic equilibrium. (15M/2023)
3. Balanced and transient genetic polymorphism. (10M/2022)
4. Discuss the role of evolutionary forces in creating human diversity. (20M/2022)
5. Genetic drift. (10M/2020)
6. How do marriage rules impact the gene pool of populations? (15M/2020)
7. Differentiate between transient and balanced genetic polymorphisms. Illustrate your answer with suitable examples from human populations. (15M/2019)
8. Implications of mutation in evolution. (10M/2019)
9. Hardy-Weinberg Law. (10M/2017)
10. Define Genetic polymorphism. Give details of its types with suitable examples. (15M/2015)
11. Discuss the factors affecting gene frequencies among human populations. (20M/2014)

12. What do you understand by 'Genetic Load' in a population? How is it measured and what are the important factors that can influence it? (15M/2013)

**9.4 Chromosomes and chromosomal aberrations in man, methodology. (a) Numerical and structural aberrations (disorders). (b) Sex chromosomal aberrations – Klinefelter (XXY), Turner (XO), Super female (XXX), intersex and other syndromic disorders. (c) Autosomal aberrations – Down syndrome, Patau, Edward and Cri-du-chat syndromes. (d) Genetic imprints in human disease, genetic screening, genetic counseling, human DNA profiling, gene mapping and genome study.**

1. How the theories of postmodernism are relevant in promoting social justice and empowerment of marginalised communities?
2. Single-gene mutation disorders in man (10M/2024)
3. What is genetic counselling? Briefly discuss various steps involved in it. (15M/2024)
4. Describe the causes of structural abnormalities of chromosomes with suitable examples. (15M/2023)
5. Genetic imprinting in human diseases. (10M/2022)
6. "Chromosomal aberrations can play havoc with the human body and mind." Explain with suitable examples. (15M/2021)
7. How do numerical aberrations in sex chromosomes lead to genetic disorders? (15M/2020)
8. What are the applications of human genomic research in human welfare? (15M/2020)
9. Describe the mechanism for structural anomalies of autosomes with diagrams. (20M/2018)
10. Explain the significance of screening and counselling for genetic disorders. (15M/2016)

**SCORE 300+  
IN ANTHRO**

**IAS 2025**



**Harsh**

**303/500**



**Scan to Watch  
Anthropology  
Strategy**

**5 of Vaid's Classroom Students  
Scored 290+ in IAS 2025**

11. Down's syndrome (10M/2015)
12. Discuss chromosomal aberrations in man illustrating with examples. (15M/2015)
13. Describe Turner and Klinefelter Syndromes. (15M/2014)
14. Genetic Counselling. (10M/2014)

**9.5 Race and racism, biological basis of morphological variation of non-metric and metric characters. Racial criteria, racial traits in relation to heredity and environment; biological basis of racial classification, racial differentiation and race crossing in man.**

1. Race and Ethnicity (10M/2023)
2. Is race a valid and biologically meaningful concept? (10M/2021)
3. Racism and Eugenics (10M/2020)
4. With reference to the somatoscopic and morphometric characteristics commonly used for racial classification, make critical comments as to whether 'Race' is a valid concept. (20M/2019)
5. Race is a Myth. Justify its Present-day Relevance. (10M/2018)
6. Concept of Race (10M/2017)
7. Explain the role of heredity and environment in the formation of races. (15M/2016)
8. Differentiate between Race and Racism. What are three major races of the world? Give important biological criteria used frequently for such a classification. (15M/2013)

**9.6 Age, sex and population variation as genetic marker- ABO, Rh blood groups, HLA Hp, transferrin, Gm, blood enzymes. Physiological characteristics-Hb level, body fat, pulse rate, respiratory functions and sensory perceptions in different cultural and socioeconomic groups.**

1. What are genetic markers? Discuss their applications in understanding population variation, disease association and forensics. (20M/2025)
2. Hemoglobin in health and disease (10M/2024)
3. Describe the genetics and inheritance patterns of the ABO and Rh blood groups in man. (15M/2024)
4. What do you understand by blood group systems? How is HLA system different from those based on red cell antigens? (15M/2022)
5. RH-blood group (10M/2016)
6. What are genetic markers and what is their usefulness? Why are blood groups considered as good genetic markers? Illustrate with examples. (15M/2013)

### **9.7 Concepts and methods of Ecological Anthropology. Bio-cultural Adaptations – Genetic and Non- genetic factors. Man's physiological responses to environmental stresses: hot desert, cold, high altitude climate.**

1. Customary laws and Environmental conservation. (10M/2023)
2. What is acclimatization? Discuss adaptive responses to high altitude and cold climate. (20M/2021)
3. Describe the biocultural responses to extreme climatic events. (15M/2020)
4. 'Human adaptations are always bio-cultural in nature'. Discuss with reference to human adaptation to high-altitude climate. (20M/2019)
5. Distinguish between adaptation, adaptability, and acclimatization with examples. (20M/2018)
6. Do Allen's Rule and Bergmann's Rule hold for human populations? Explain with examples. (15M/2018)
7. Discuss the responses and acclimatization to high altitude stresses. (15M/2017)
8. Discuss the genetic and non-genetic factors in the bio-cultural adaptations of human beings to different environments. (20M/2016)
9. Critically examine the physiological responses and acclimatization to cold climate in man. (15/2015)
10. What are the stresses at high altitudes? How do better cardiorespiratory functions help the native highlanders in combating low environmental pressure? (15M/2014)
11. Ecological Anthropology. (10M/2014)
12. Elaborate upon major human adaptations to heat and cold. (15M/2013)
13. "Though human growth is under tight genetic control but it is influenced by various environmental factors". Justify. (15M/2013)

### **9.8 Epidemiological Anthropology: Health and disease. Infectious and non-infectious diseases. Nutritional deficiency related diseases.**

1. Critically comment on the lifestyle diseases and their impact on human health. (15M/2024)
2. Elucidate the different forms of malnutrition. Describe protein-calorie malnutrition with suitable examples. (15M/2023)
3. What is meant by health? Is the burden of lifestyle diseases on the rise? Justify your answer with suitable examples. (15M/2022)
4. Describe the impact of infectious diseases on indigenous populations. (15M/2020)
5. Critically examine the demographic and epidemiological consequences with the rise in food production and sedentism. (15M/2020)

6. Narrate the evolution of disease and major causes of ill health in human populations. (15M/2018)
7. Describe the scope of Epidemiological Anthropology in the study of infectious and non-infectious diseases. (20M/2016)
8. Epidemiological Anthropology. (10M/2014)
9. Discuss the role of anthropology in the understanding of health and disease. What specific understanding is available with respect to infectious and non-infectious diseases? (20M/2014)
10. What is meant by epidemiological transition? Elaborate upon its causes and consequences highlighting major health problems of our adult population today. (15M/2013)

**10. Concept of human growth and development: stages of growth - pre-natal, natal, infant, childhood, adolescence, maturity, senescence. -**

**Factors affecting growth and development genetic, environmental, biochemical, nutritional, cultural and socioeconomic.**

**- Ageing and senescence. Theories and observations - biological and chronological longevity. Human physique and somatotypes. Methodologies for growth studies.**

1. Foetal origin of adult diseases and contribution of David Barker. (10M/2025)
2. What is the mixed-longitudinal method of studying human growth? Discuss its merits and demerits. (15M/2023)
3. Why did Heath and Carter use anthropometric measurements instead of photographs to assess somatotype? Elaborate on their method. (20M/2022)
4. Stages of human pre-natal development. (10M/2022)
5. Human adolescent growth spurt. (10M/2021)
6. Discuss the physiological and evolutionary theories of aging. (15M/2021)
7. Secular trends in human growth can be positive, negative, or neutral. Illustrate with examples. (20M/2020)
8. Senescence. (10M/2020)
9. Genetico-environmental factors affecting human growth. (15M/2019)
10. Discuss the methods of studying human growth with their merits and demerits. (15M/2019)
11. Issues of elderly and senescence in developing and developed countries. (10M/2018)
12. Discuss Sheldon's method of somatotyping. (15M/2017)

13. Describe the various methods of studying growth, highlighting their merits and demerits. (15M/2017)
14. Discuss different factors affecting growth and development in human beings. (20M/2016)
15. What is an Anthropometric Somatotype? Describe Heath & Carter's method of somatotyping. (20M/2015)
16. What are the different stages of growth? Describe any one of them in detail. (20M/2014)
17. Discuss aging and senescence. Describe either the biological or social theories of aging. (20M/2014)
18. Longitudinal method of studying growth. (10M/2015)
19. Justify: "Though human growth is under tight genetic control, it is influenced by various environmental factors." (15M/2013)
20. Differentiation between child growth and development. (10M/2013)
21. Cross-sectional methods of studying human growth. (10M/2014)
22. Aging and senescence. (10M/2013)

### **11.1 Relevance of menarche, menopause and other bioevents to fertility. Fertility patterns and differentials.**

1. Evolutionary significance of menopause. (10M/2025)
2. Menopausal symptoms (10M/2023)
3. Critically evaluate the reasons for the reduction in age at menarche in human females over successive generations (15M /2022)
4. Age at menarche (10M/2017)
5. Menopause and its impact (10M/2015)
6. Discuss the relevance of menarche, menopause, and other bio-events to fertility (15M/2014)

### **11.2 Demographic theories- biological, social and cultural.**

1. Discuss the contemporary population problems in the light of various socio-cultural demographic theories. (20M/2022)
2. Demographic transition. (10M/2013)

### **11.3 Biological and socio-ecological factors influencing fecundity, fertility, natality and mortality.**

1. Discuss the bio-social determinants of fertility and fecundity. (15M/2021)
2. Discuss the biological factors influencing fertility in light of the relationship between fecundity and fertility. (15M/2019)

3. Describe the biological and socio-ecological factors affecting fertility and mortality. (15M/ 2017)
4. Define fecundity and explain major factors affecting fecundity in Indian populations. (15M/ 2018)
5. Fertility and Fecundity. (10M/ 2016, 2014)

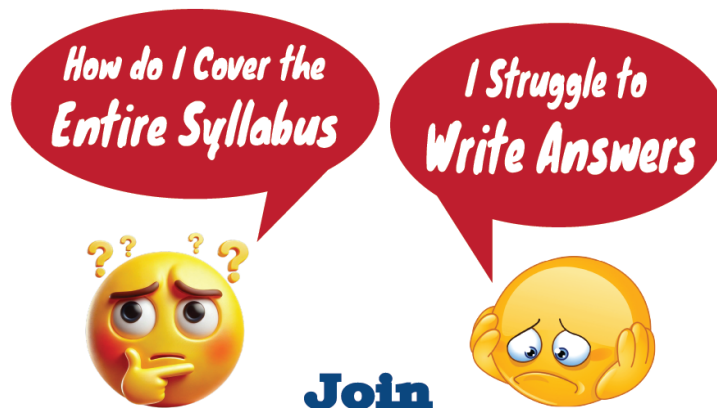
**12. Applications of Anthropology: Anthropology of sports, Nutritional anthropology, Anthropology in designing of defence and other equipments, Forensic Anthropology, Methods and principles of personal identification and reconstruction, Applied human genetics – Paternity diagnosis, genetic counseling and eugenics, DNA technology in diseases and medicine, serogenetics and cytogenetics in reproductive biology.**

1. Examine the utility of human remains in forensic analysis. Discuss the facial reconstruction technique. (15M/2025)
2. How anthropologists assess the nutritional status of a community? Discuss the significance of intersectionality of ecology, culture, and social inequality in the study of nutritional anthropology. (20M/2025)
3. Discuss the applications of forensic anthropology with suitable examples. (15M/2024)
4. Describe the practical applications of DNA technology in the current scenario. (15M/2023)
5. Discuss various methods of personal identification based on skeletal remains. (15M/2023)
6. Discuss how anthropological knowledge of the human body may be used in designing equipment and articles of human use. (15M/2022)
7. How are the cases of disputed paternity solved? Discuss the recent techniques. (15M/2021)
8. What is Anthropometry? Discuss its role in assessing the nutritional status and sports capability of a person. (15M/2021)
9. What are the applications of human genomic research in human welfare? (15M/2020)
10. Ethics and Genetic Engineering. (10M/2020)
11. Anthropological inputs in facial reconstruction. (10M/2019)
12. 'Applied human genetics has come to touch every sphere of human life.' Discuss in light of recent advances in molecular anthropology. (15M/2019)
13. What are the methods of personal identification? Critically examine how personal identification helps in criminal investigations. (20M/2017)
14. Describe the role of Anthropology in designing defense and other equipment. (15M/2016)
15. Write short notes on Forensic Anthropology. (10M/2016)

16. DNA Technology in Medicine. (10M/2015)
17. Elucidate the role of Anthropology in selecting and monitoring sports persons. (15M/2015)
18. Forensic Science can help in Criminal Investigations. Discuss. (20M/2015)

### Miscellaneous

1. How political economy is integrated with ecological and adaptability perspectives in bio-cultural anthropology? (15M/2025)
2. Differentiate between Discuss the history and application of these methods in anthropological studies. (15M/2025)



# ANTHROPOLOGY SAMPOORNA Test Series



**EVERY TEST GETS YOU  
CLOSER TO LBSNAA**

[www.vaidsics.com](http://www.vaidsics.com) | 953 800 1600

## Paper – 2

### 1.1. Evolution of the Indian Culture and Civilization— Prehistoric (Palaeolithic, Mesolithic, Neolithic and Neolithic-Chalcolithic), Protohistoric (Indus Civilization). Pre-Harappan, Harappan and post Harappan cultures. Contributions of the tribal cultures to Indian civilization.

1. Lothal dockyard and international trade relations (10M/2025)
2. Describe the distinctive features and distribution of Upper Palaeolithic of India. (20M/2025)
3. 'Soanian cultural' tradition (10M/2025)
4. Origin of State Societies (10M/2024)
5. Critically describe evidences from Rakhi Garhi and its linkages to Harappan civilization. (20M/2024)
6. Describe the important Paleolithic sites from South India with suitable examples. What is the significance of South Indian Paleolithic cultures? (20M/2024)
7. Prehistoric rock art from Uttarakhand. (10M/2023)
8. Material culture and archaeology. (10M/2023)
9. Was Mesolithic culture the first step towards a sedentary way of life? Illustrate your answer by citing suitable examples. (15M/2023)
10. Indus valley was the first settlement of the big civilization. Comment critically. (15M/2023)
11. Pit-dwellers of Kashmir. (10M/2022)
12. Make a critical appraisal of Megalithic tradition in India with special reference to North-East India. (20M/2022)
13. Describe briefly the proto-history of Gujarat. Discuss the significance of Gujarat proto-history in international trade. (15M/2022)
14. Harappan Seals (10 M/ 2021)
15. Cultural diversity and multi-culturalism (10 M/ 2021)
16. Give the distribution and characteristic features of Upper Paleolithic culture in India. (15 M/ 2021)
17. Critically discuss the origin of Indus Valley Civilization. Mention the evidence of its endogenous origin from the pre-Harappan sites. (20 M/ 2021)
18. Discuss the characteristic features of Neolithic culture in India. (20M/ 2020)
19. Discuss the Contributions of V.N. Misra to archaeological anthropology in India. (15M/ 2020)

20. Contributions of Robert Bruce Foote to Indian archaeology. (10M/ 2020)
21. Debates on Aryan invasion. (10M/ 2020)
22. Distribution of Neolithic sites in India. (10 M/ 2019)
23. Describe the Paleolithic culture with special reference to Soanian tradition. Indicate the problems of describing the Indian Paleolithic. (20M/ 2019)
24. What has been the contribution of tribal people to the Indian independence movement? (15 M/ 2019)
25. What kind of society may be reconstructed from the archaeological evidences of Harappan culture? (20 M/ 2019)
26. Examine the regional variations of Mesolithic cultures of India. (20 M/ 2018)
27. Explain the contribution of tribal cultures to Indian civilization. (20 M/ 2018)
28. Neolithic cultures of South India. (10M/ 2017)
29. Describe the salient features of Chalcolithic cultures of the Deccan. (15M/ 2017)
30. Describe various aspects of trade and religion of Harappan civilization. (15M/ 2017)
31. Give a detailed appraisal of skeletal remains from Chalcolithic culture of undivided Punjab. (20M/ 2016)
32. Short notes on Mesolithic findings from Belan Valley. (10M/ 2016)
33. South Indian Paleoliths. (10 M/ 2015)
34. Prehistoric Rock Art of Central India. (10 M/ 2015)
35. Discuss the significance of Harappan civilization sites from India. (15 M/ 2015)
36. Neolithic cultures of North-East India. (10 M/ 2014)
37. Describe what is known of Harappan Religion. Have some of its elements continued into later Hinduism? Discuss. (20 M/ 2014)
38. Discuss salient features of Mesolithic culture in India with special reference to Western India. (10 M/ 2013)
39. Indian Paleolithic culture can neither be conceived chronologically homogenous nor as a uniform cultural phase. Discuss. (15 M/ 2013)
40. Discuss the significance of the study of religious centres to the understanding of Indian civilization. (20 M/ 2013)

## **1.2. Palaeo–Anthropological evidences from India with special reference to Siwaliks and Narmada basin (Ramapithecus, Sivapithecus and Narmada Man).**

1. Taxonomic status of Ramapithecus in the light of Ramapithecus-Sivapithecus controversy(10M/2025)

2. Discuss the palaeoanthropological significance of Siwaliks of India giving its subdivisions, fossil primate fauna and major primate fossil localities. (20M/2025)
3. Ramapithecus-Sivapithecus debate. (10M/2023)
4. Siwalik deposits show a variety of Neogene fossil primates. Critically examine. (15M/2023)
5. What are the arguments for excluding Narmada Man from the Homo erectus category? (10M/2022)
6. Discuss the morphological features and phylogenetic position of Ramapithecus. (15 M/ 2021) (10M/2019)
7. Narmada Man. (10M/2020)
8. Describe the salient features of Sivapithecus. (15 M/2018)
9. Discuss the salient features of Ramapithecus. (15M/2017)
10. Delineate the salient characteristics of 'Narmada Man' and examine its phylogenetic significance. (15M/2016)
11. Describe the Paleoanthropological fossil finds from Siwalik Hills. Examine the contribution of Siwalik fossils to paleoanthropological knowledge. (15 M/2015)
12. Describe the evolutionary significance of the fossil finds of the Narmada Basin. (15 M/2014)
13. Examine the debates related to Ramapithecus. (10 M/2013)

### **1.3. Ethno-archaeology in India: The concept of ethno-archaeology; Survivals and Parallels among the hunting, foraging, fishing, pastoral and peasant communities including arts and crafts producing communities.**

1. Discuss the importance of ethnoarchaeology in reconstructing the past citing Indian examples. (15M/ 2020)
2. Ethno-archaeological analysis of hunting activities of contemporary tribal communities. (10M/ 2019)
3. Ethno-archaeology as a research strategy. (10M/ 2018)
4. Write short notes on Ethno-archaeology. (10M/ 2017)
5. Discuss the relevance of art and craft traditions in the understanding of Indian archaeology. (15M/ 2017)
6. Ethno-archaeological evidences for the survival of hunting-gathering traditions. (10M/ 2016)
7. Discuss the importance of the ethno-archaeological approach to the study of indigenous craft in India. (15M/ 2014)

## 2. Demographic profile of India— Ethnic and linguistic elements in the Indian population and their distribution. Indian population—factors influencing its structure and growth.

1. Elucidate the role of demographic and social factors for population growth in India. (15M/2025)
2. Delineate the major features of S. S. Sarkar's classification of Indian populations. Was his classification better than Risley? Explain. (15M/2025)
3. What are the demographic challenges of India's changing population dynamics in the next 50 years? (15M/2024)
4. Dravidian languages and their subgroups. (10M/2023)
5. Critically compare Risley's and Sarkar's approaches to the classification of peoples of India. (15M/2023)
6. Describe the methods adopted by Sir Herbert Hope Risley in classifying Indian populations. What are the criticisms against Risley's classification? (15M/2022)
7. Austroasiatic languages. (10M/2022)
8. Delineate the factors influencing fertility in the Indian population. (15M/2021)
9. Dravidian languages. (10M/2020)
10. Distribution of the Tibeto-Burman group of languages in India. (10M/2019)
11. What are the various factors influencing population growth in India? Discuss. (15M/2018)
12. Write short notes on Endangered Languages. (10M/2018)
13. Write short notes on Austro-Asiatic linguistic groups in India. (10M/2017)
14. Give your assessment of the reason for the imbalance in the sex ratio in India. (20M/2017)
15. Short notes on linguistic elements in the Indian population. (10M/2016)
16. Briefly describe the classical model of ethnic and linguistic classifications of the Indian population. Discuss its relevance today. (15M/2015)
17. Major linguistic divisions of India. (10M/2014)
18. Outline the distribution of Dravidian languages in India and describe their cultural significance. (15M/2014)

### 3.1. The structure and nature of traditional Indian social system/Varnashram, Purushartha, Karma, Rina and Rebirth.

1. Varnashrama and its contemporary relevance (10M/2025)
2. Karma and Rebirth. (10M/2023)

3. Interface between Purushartha and Ashrama. (10M/2023)
4. Varna and Buddhism. (10M/2022)
5. Dharma versus Religion. (10M/2022)
6. Purushartha and righteous living today. (10 M/ 2021)
7. Use of karma and rebirth in justifying the varna system. (10 M/2019)
8. Philosophy behind Purusharthas. (10 M/2018)
9. Write short notes on Varnashram and the concept of rina. (10M/2018)

### **3.2. Caste system in India— Structure and characteristics Varna and caste, Theories of origin of caste system, Dominant caste, Caste mobility, Future of caste system, Jajmani system. Tribe-caste continuum.**

1. What are the different types of caste mobility in India? Highlight the various factors responsible for it. (20M/2025)
2. Caste domination, factionalism and political power (10M/2025)
3. Discuss the theories on the origin of the caste system and its criticism in India. Differentiate between caste, class, and race. (15M/2024)
4. Is annihilation of caste possible? Discuss the future of the caste system in light of various proactive measures taken by the Indian state. (20M/2023)
5. Is caste mobility a recent phenomenon? Discuss in the light of Indological and Empirical context. (15M/2023)
6. Jajmani system: continuity and change. (10M/2023)
7. Critically describe Dr. B. R. Ambedkar's argument on the origin of the Indian caste system. (15M/2022)
8. Relevance of tribe-caste continuum. (10 M/ 2021)
9. Caste and social capital. (10 M/ 2021)
10. Factionalism and politics in rural India. (10M/2021)
11. Concept of dominant caste. (10M (2020)
12. Explain the reasons for caste violence in India with suitable examples. (20M (2020)
13. Discuss the characteristics of the caste system in India. (20M (2020)
14. The Jajmani system and the contemporary market economy. (10M 2019)
15. Explain the significance of the tribe-caste continuum in the present context. (15 M/2018)
16. Discuss the view that caste is not social stratification, but a system of hierarchy. (15 M/2018)
17. Based on historical and contemporary evidence, discuss the future of the caste system in India. (15 M/2018)
18. Discuss the impact of the market economy on the Jajmani system. (20M/2017)

19. Examine the structural and cultural theories of the caste system in India. (20M/2016)
20. Relevance of caste in contemporary Indian politics. (10M/2016)
21. What do you understand by the dynamics of caste mobility? How did the concept of Sanskritization contribute to its functionality? (20 M/ 2015)
22. Critically examine the concept of the tribe-caste continuum and its relevance in contemporary India. (15 M/ 2015)
23. Define the concept of 'Dominant Caste' and examine its relevance in the contemporary Indian village with suitable examples. (20 M/ 2014)
24. Do you think caste persists in contemporary India? Critically discuss. (15 M/ 2014)
25. Tribe-Caste continuum. (10 M/ 2014)
26. Discuss how Louis Dumont explained the caste system. (10 M/ 2013)
27. What is the Jajmani system? Examine the views on the Jajmani system as an egalitarian as well as an exploitative system. Give reasons for its decline. (25 M/ 2013)
28. Examine the criticisms of the concept of the dominant caste. (15 M/ 2013)

### 3.3. Sacred Complex and Nature-Man-Spirit Complex.

1. Explain the impact of the concept of nature-man-spirit complex on the sustainable use of natural resources with suitable examples. (20 M/ 2021)
2. Critically examine the contributions of Makhan Jha and B. N. Saraswati to the study of sacred complexes in India. (20 M/ 2018)
3. Write short notes on Nature-Man-Spirit Complex. (10 M/ 2017)
4. Sacred complex as a dimension of Indian civilization. (10 M/ 2015)
5. Describe the concept of 'Sacred Complex' with an ethnographic example. (15 M/ 2014)
6. Examine Nature-Man-Spirit Complex as an ecological concept. (15 M/ 2013)

### 3.4. Impact of Buddhism, Jainism, Islam and Christianity of Indian society.

1. Evaluate the impact of Christianity on Scheduled Tribe societies of North-East India. (15M/2025)
2. Religious pluralism and social solidarity. (10M/2023)
3. Discuss the basic tenets of Jainism and its impact on Indian society. (15M/2023)
4. Critically examine 'Indigenisation of Christianity' in India. (15M/2022)
5. Discuss the impact of Islam on Indian society. (20M/2020)
6. Explain the impact of Buddhism and Jainism on Indian society. (20M/2018)
7. Explain how Buddhism influenced the economic and cultural transformations of Indian society. (20M/2017)
8. Impact of Jainism on Indian society. (10M/2016)

9. Islam and Matriliney. (10M/2015)
10. Discuss the contribution of Islam to the composite culture of India. (15M/2014)
11. Describe what is known of Harappan Religion. Have some of its elements continued into later Hinduism? Discuss. (20M/2014)
12. Sufi tradition of Islam. (10M/2013)

#### **4. Emergence, growth and development in India— Contributions of the 18th, 19th and early 20th Century scholar-administrators. Contributions of Indian anthropologists to tribal and caste studies.**

1. Highlight the significant contributions of B. S. Guha, Irawati Karve and S. R. K. Chopra to Indian Anthropology. (15M/2025)
2. Deconstruct the colonial history of Indian Anthropology highlighting the critical role played by the Indian Anthropologists in sustaining its autonomy. (15M/2024)
3. Discuss the contribution of P.K. Bhowmick in decriminalising the status of the Lodha tribe. (15M/2024)
4. What are the ethical concerns in biological and socio-cultural anthropology because of recent advances in AT and genetic research? (20M/2024)
5. B.K. Roy Burman's concept of 'Buffer Zone'. (10M/2024)
6. Tribes are backward Hindus. Critically comment with reference to the contributions of G.S. Ghurye. (20M/2023)
7. Critically evaluate the contributions of S. C. Roy to Indian anthropology. (15M/2023)
8. Illustrate the contribution of Irawati Karve to Indian Anthropology. Make a special mention of her literary contribution. (20M/2022)
9. Assess the contributions of S. C. Dube in Indian village studies. (15M/2022)
10. Examine the contributions of S. C. Roy in highlighting the role of customary laws in tribal life. (15 M/2021)
11. Discuss the contributions of N. K. Bose in understanding tribal communities and their place in Indian civilization. (20 M/2021)
12. Contributions of K.S. Singh to Indian anthropology. (10M/2020)
13. Write about the role of colonial administration in the development of anthropology in India. (15M/2019)
14. Give an account of the contributions of Irawati Karve and B.S. Guha to the analysis of caste and race in India. (20M/2019)
15. Discuss the contribution of S. C. Roy in the study of tribal cultures in India. (15 M/2018)
16. Compare and contrast the economic typology of tribes given by different anthropologists. (20 M/2018)

17. Discuss the contribution of Nirmal Kumar Bose to the understanding of Indian society. (20M/2017)
18. Discuss the contribution of L.P. Vidyarthi and D.N. Majumdar to the study of Indian tribes. (15 M/2016)
19. Write about the contributions made by Christoph von Furer-Haimendorf to tribal anthropology in India. (15M/2016)
20. Discuss the contribution of M. N. Srinivas to the study of Indian society. Examine the influence of British social anthropologists on his ideas. (15 M/2015)
21. Discuss the contributions of S. C. Roy to understanding the tribes of India. (20 M/2014)
22. Examine the anthropological contributions dealing with tribes and Indian civilization. (20 M/2013)
23. Discuss the contributions of H. D. Sankalia to prehistoric anthropology in India. (20 M/2013)
24. Assess the contributions of early 20th-century ethnographic tradition to Indian anthropology. (15 M/2013)

### **5.1. Indian Village— Significance of village study in India; Indian village as a social system; Traditional and changing patterns of settlement and inter-caste relations; Agrarian relations in Indian villages; Impact of globalization on Indian villages.**

1. "The village was not merely a place where people lived; it had a design in which were reflected the basic values of Indian civilization." Who said this? Elaborate. (20M/2025)
2. Digitisation of rural economy. (10M/2024)
3. Village as little republic. (10M/2023)
4. "Globalisation, on one hand, has provided opportunities and on the other hand, thrown challenges to Indian villages." Elucidate. (20M/2022)
5. Explain how structural transformation in the economy is affecting traditional social relationships in agrarian society. (20 M/ 2021)
6. Describe the different settlement patterns in rural India. (20 M/2020)
7. Discuss the impact of globalization on Indian villages. (15 M/2020)
8. Khap Panchayat. (10M/2020)
9. Identify the theoretical concepts that have emerged out of village studies in India. (20 M/2019)
10. Discuss the impact of media on the social life of Indian villages. (15M/ 2019)

11. Describe the impact of industrialization on the economic and social aspects of India's villages. (15M/2019)
12. Discuss the impact of market economy on rural villages. (15 M/2018)
13. Agrarian social structure. (10 M/2018)
14. Examine the colonial administrators' view that Indian villages can be considered as 'little republics.' (15 M/2018)
15. Give a critical evaluation of any one anthropological village study in India. (15M/2017)
16. Explain Indian village as a social system with an example. (20M/2016)
17. Describe the traditional patterns of settlement of Indian villages. (20M/2016)
18. Examine the contribution of village studies towards the understanding of the Indian social system. (20 M/2015)
19. Discuss the impact of globalization on the village economy in India. (15 M/2015)
20. Examine the impacts of the Green Revolution on the rural poor. (15 M/2013)
21. Indian farmers are not slow to react to economic opportunities. Discuss this statement. (15 M/2013)

## 5.2. Linguistic and religious minorities and their social, political and economic status.

1. Define minority. Elaborate the patterns of linguistic and religious minorities in India. (15M/2025)
2. Syro-Malabar Christians. (10M/2024)
3. Safeguards for linguistic minorities in India. (10M/2022)
4. Discuss the constitutional safeguards for religious minorities in India. (15 M/2021)
5. What are the social and political problems of religious minorities in India? (20 M/2020)
6. Linguistic minorities in India. (10 M/2020)
7. OBCs among non-Hindu communities. (10M/2018)
8. Discuss the social, political and economic status of Muslims in India. (15M/2017)
9. Discuss the problems faced by religious minorities in India. (15 M/2015)

## ANTHROPOLOGY Comprehensive Classroom Course

Taught by Real  
Anthropologists

300+ questions  
Prepared & Evaluated

Extensive Syllabus  
Coverage

Test Series Included

1-to-1 Mentorship

PYQ Integration

Course Validity: Life Time

www.vaidsics.com  
953 800 1600



### **5.3. Indigenous and exogenous processes of socio-cultural change in Indian society: Sanskritization, Westernization, Modernization; Inter-play of little and great traditions; Panchayati Raj and social change; Media and Social change.**

1. Characteristics and communication between Little and Great Traditions (10M/2025)
2. Compare and contrast the approaches of M.N. Srinivas and L.P. Vidyarthi to social change in village India. (15M/2024)
3. Sanskritization is a culturally bound concept. Critically comment to assess the strength and limitation of this concept in developing a theoretical framework to study social change. (20M/2023)
4. Westernisation and Modernisation. (10M/2022)
5. Ethnic media and social awareness. (10 M/2021)
6. Discuss the role of Panchayat Raj Institutions in transforming traditional power hierarchy in rural India. (15 M/2021)
7. Concept of Sanskritization. (10M/2020)
8. Discuss how the elements of little and great traditions combine in the emergence of social/political/religious movements, giving any one example to illustrate the issue. (20M/2019)
9. Impact of Panchayati Raj institutions in rural areas. (10M/2018)
10. Modernization. (10M/2018)
11. Describe the media as an instrument for social change. (15M/2017)
12. Discuss the impact of Panchayati Raj institutions on the empowerment of rural women in India. (15M/2017)
13. How is the process of tribe-caste continuum different from Sanskritization? (15M/2016)
14. What do you understand by the dynamics of caste mobility? How did the concept of Sanskritization contribute to its functionality? (20 M/2015)
15. Panchayati Raj institutions and social change. (10 M/2015)
16. Examine the social implications of media and communication technology. (20 M/2015)
17. Great tradition and little tradition. (10 M/2014)

### **6.1. Tribal situation in India— Bio-genetic variability, linguistic and socio-economic characteristics of the tribal populations and their distribution.**

1. Describe the nature of traditional socioeconomic interdependence among the Toda, Kota, Kurumba and Irula tribes of Nilgiri Hills. Highlight the changes occurring in these interrelationships. (20M/2025)

2. Artisan tribes of Jharkhand. (10M/2024)
3. Describe ILO's Convention No. 169 (1989) on Indigenous and Tribal people. Is India a signatory to it? (10M/2024)
4. Agricultural practices of the Apatani. (10M/2024)
5. Discuss the distribution of tribes in different geographical regions of India. Identify the distinct institutional features of tribal societies of these regions. (20M/2023)
6. How can a balance be struck between livelihood concern and environmental degradation in the context of shifting cultivation? (15M/2022)
7. Concept of tribe and Indian census. (10 M/ 2021)
8. Elucidate the linguistic classification of Indian tribes. (15M/2020)
9. What are the salient issues faced by pastoral communities in India? Discuss with suitable examples. (15M/2019)
10. Distinctive cultural features of tribes of Andaman Islands. (10M/2018)
11. Tribe and Scheduled Tribe. (10M/2018)
12. Youth dormitory as an institution. (10M/2018)
13. Compare and contrast the economic typology of tribes given by different anthropologists. (20M/2018)
14. Bio-genetic variability of Indian tribes. (10M/2016)
15. Tribe as a colonial construct. (10M/2016)
16. Socioeconomic characteristics of Shifting cultivators. (10M/2015)
17. Biogenetic variations of Indian tribes. (10M/2014)
18. Social and economic marginalization of tribal people. (10M/2014)
19. Threat to tribal languages in India. (10M/2013)
20. Linguistic classification of Indian tribes. (10M/2013)

## **6.2. Problems of the tribal Communities— Land alienation, poverty, indebtedness, low literacy, poor educational facilities, unemployment, under-employment, health and nutrition.**

1. Examine the environmental and biocultural factors influencing the health of tribals of India. (15M/2025)
2. Causes of stunting and wasting among tribal children. (10M/2024)
3. Custodians of natural resources are the tribals, but they are the most deprived. Critically examine how climate change will impact their survival in future. (20M/2024)
4. Critically examine existing paradigms of holistic health for the marginalised sections of society drawing inferences from COVID-19 pandemic. (20M/2024)
5. Major problems of nomadic and semi-nomadic groups. (10M/2022)

6. Issues of tribal agricultural labourers. (10M/2022)
7. Elucidate the problems and challenges in educational attainment of the Scheduled Tribes. (15 M/ 2021)
8. Examine the factors responsible for malnutrition in tribal India and suggest interventions required to overcome the problem. (15 M/ 2021)
9. Elucidate the problems of land alienation among tribals of India. (15M/2020)
10. Issues related to tribal education. (10M/2019)
11. Indebtedness among tribal communities. (10M/2017)
12. Describe the impact of displacement on the health and nutritional status of the tribal communities. (20M/2017)
13. Discuss how constitutional provisions in India have built-in mechanisms for dealing with the problem of land alienation in tribal areas. (20 M/2015)
14. Discuss the sociocultural, economic, and psychological constraints responsible for low literacy in tribal areas. (15 M/2015)
15. Discuss the impact of land alienation on the tribes of Central India. (15 M/2014)
16. Discuss the impact of Globalization on the livelihood of tribal populations. (20 M/2014)
17. Discuss alternatives for shifting cultivators in the context of ecological costs and humanistic concerns. (20 M/2013)

### **6.3 Developmental projects and their impact on tribal displacement and problems of rehabilitation. Development of forest policy and tribals. Impact of urbanisation and industrialization on tribal populations.**

1. Impact of urbanization and industrialization on tribal communities of India (10M/2025)
2. Examine the impact of Forest Policies from 1878 to 2006 on land alienation and deprivation of rights of tribal communities in India. (15M/2024)
3. Critically examine how the displacement of tribal communities due to hydroelectric river dam projects has affected women in the local context. Elucidate with suitable ethnographic examples. (15M/2023)
4. Urbanization and tribal Institutions. (10 M/2021)
5. Discuss the impact of the Forest Rights Act (2006) on the livelihood and culture of tribal people in India. (20 M/2021)
6. Discuss the problems involved in the rehabilitation and resettlement of tribals displaced due to development projects in India. (15 M/2021)
7. Explain the impact of successive Land Acquisition Acts on tribal social organization. (20M/2021)

8. Explain the impact of development-induced displacement among tribal people in India with examples. (20M/2020)
9. What has been the impact of development projects on the environment and livelihood of forest-dwelling tribes? (15M/2019)
10. Discuss the significance and implementation of the 'Recognition of Forest Rights Act 2006'. (15 M/ 2018)
11. Examine the advancements made in the Land Acquisition and Rehabilitation Act of 2013 over the Land Acquisition Act of 1894. (15 M/2018)
12. Impact of industrialization on the Scheduled Tribe population of Jharkhand. (10M/2016)
13. Explain the difficulties experienced by Scheduled Tribes with regard to the implementation of the 'Recognition of Forest Rights Act 2006'. (15M/2016)
14. Forest policy and tribes. (10 M/2014)
15. Impacts of sanctuaries and national parks on tribal populations. (10 M/2013)

### **7.1 Problems of exploitation and deprivation of Scheduled Castes, Scheduled Tribes and Other Backward Classes. Constitutional safeguards for Scheduled Tribes and Scheduled Castes.**

1. Trace the history and describe the methods of formulating the lists of OBCs, both at the State and National levels. (15M/2025)
2. Critically examine the concept of Scheduled Tribe (ST) and mention the limitations of administrator's criteria.(15M/2025)
3. Constitutional Safeguards for Backward Classes (10M/2024)
4. Status of Sixth Schedule Areas (10M/2024)
5. How is the PESA Act empowering local self-governance and impacting women's political participation? (15M/2024)
6. Scheduled Areas (10M/2023)
7. How are other backward classes identified? Enumerating the important features, elucidate the recent changes in their social and economic life. (15M/2023)
8. Role of the Governor in the Fifth Schedule Areas (10M/2022)
9. Discuss the issues and solutions related to the Scheduled Caste and the Scheduled Tribe populations in India. (15M/2022)
10. Politics of Recognition and Deprivation (10 M/2021)
11. Critically evaluate the state of implementation of constitutional safeguards for the Scheduled Castes. (15M/2020)
12. Describe the provisions under the Sixth Schedule of the Indian Constitution. (15M/2020)

13. What are the Constitutional Safeguards to Protect the Interests of Indian Tribes? (15M/2019)
14. What has been the impact of non-Hindu religions on the emancipation of Scheduled Castes in India? (15M/2019)
15. OBCs among Non-Hindu Communities (10M/2018)
16. Discuss the salient features of PESA Act of 1996 and attempt a comparison with the features of the VI Schedule. (15M/2018)
17. Tribe and Scheduled Tribe. (10M/2018)
18. Discuss the Constitutional Safeguards for the Scheduled Caste. (15M/2017)
19. Other Backward Class. (10M/2017)
20. Give a critical appraisal of any one tribal development programme during the Twelfth Five-Year Plan. Give suggestions for any improvement in the programme. (15M/2017)
21. Write in detail various provisions provided by the Constitution of India for the Scheduled Tribes under the Fifth and Sixth Schedules. (20M/2016)
22. Examine the factors responsible for the exploitation of Scheduled Castes in India. (20M/2016)
23. Critically examine the constitutional provisions for safeguarding the interests of Scheduled Tribes in India. (20 M/ 2014)
24. Role of the Governor in Fifth Schedule Areas. (10 M/ 2015)
25. Discuss the Social Disabilities Suffered by Scheduled Castes. (15 M/ 2013)

## **7.2 Social change and contemporary tribal societies: Impact of modern democratic institutions, development programmes and welfare measures on tribals and weaker sections.**

1. Identify the contemporary limitations in the process of tribal development. How can anthropological knowledge contribute in this process? (20M/2025)
2. Discuss the economic, social, and developmental impacts on tribal communities with special reference to mining. (15M/2024)
3. Critically examine the impact of modern democratic institutions on contemporary tribal societies. Illustrate with suitable ethnographic examples. (15M/2023)
4. Discuss the objectives of Integrated Tribal Development Projects (ITDPs). How far have these objectives been achieved? (20M/2022)
5. Describe the functions of Tribal Research Institutes in India. (15M/2020)
6. Discuss the effect of job reservations in alleviating unemployment among tribal people of India. (15 M/2020)
7. Critically assess the existing plans and programmes meant for tribal welfare. (15 M/2019)

8. Discuss the nature of social change in Tribal India under the impact of Developmental programmes. (15 M/2015)
9. Give a critical appraisal of any one tribal development programme during XIIth Five-Year Plan. Give your suggestions for any improvement in the programme. (15M/2017)
10. Discuss how various tribal development programs and plans have impacted the process of social transformation among tribes. (15M/2016)
11. Discuss the nature of social change in tribal India under the impact of development programmes. (15M/2015)
12. Relevance of Tribal Panchsheel today. (10M/2015)
13. Examine the impact of non-tribal contract on socio-cultural institutions of tribal people with suitable examples. (15M/2013)
14. Examine the impacts of the green revolution on rural poor. (15M/2013)

### **7.3 The concept of ethnicity; Ethnic conflicts and political developments; Unrest among tribal communities; Regionalism and demand for autonomy; Pseudo-tribalism. Social change among the tribes during colonial and post-Independent India.**

1. Discuss the rising ethnic conflicts in India and propose their possible remedial measures. (15M/2025)
2. Tribalism and Pseudotribalism (10M/2025)
3. Regionalism and Autonomy (10M/2025)
4. Distinguish between ethnic identity and ethnicity, discuss the factors responsible for ethnic conflict in tribal areas. (15M/ 2023)
5. Compare the nature of tribal movements between North-East and Central India. Briefly mention the current status of existing tribal movements in these areas. (20M/2022)
6. Regionalism as an opportunity and threat to national integration. (10M/2022)
7. Identify the causes of tribal unrest with special reference to North-East India. (15M/2021)
8. Identify the causes of tribal unrest with special reference to North-East India. (15 M/ 2021)
9. Concept of ethnicity. (10M/ 2020)
10. Ethnicity and regionalism. (10M/2019)
11. Discuss the various factors resulting in tribal unrest in various parts of India. (15 M/ 2018)
12. Ethnicity and regionalism. (10M/ 2017)
13. The role regionalism plays in demand for autonomy among Indian tribes. (10M/ 2016)
14. Rights over resources and tribal unrest. (10 M/ 2015)

15. Discuss the rise of ethno-nationalism among Indian tribes with specific examples. (15 M/ 2014)
16. What are the significant factors responsible for tribal unrest? (15 M/ 2014)
17. Ethnic movements in India. (10 M/ 2013)
18. Examine the impact of non-tribal contact on socio-cultural institutions of tribal people with suitable examples. (15 M/ 2013)
19. Government Action towards Left Wing Extremism. (10M/2013)

### **8.1 Impact of Hinduism, Buddhism, Christianity, Islam and other religions on tribal societies.**

1. Explain the social and religious consequences of contact between tribal and non-tribal populations. (15M/2022)
2. Critically assess the impact of Christianity on tribal culture and identity. (15 M/ 2021)
3. Explain the impact of Hinduism on tribal people of India. (15 M/2020)
4. Describe the impact of Buddhism on the tribal population of India. (15 M/2019)
5. Impact of Christianity on Indian tribes. (10 M/2017)
6. Discuss the impact of Islam on Scheduled Tribes of India. (15M/2016)
7. Discuss the impact of Hinduism on the status of tribal women in Central India. (15 M/ 2015)
8. Impact of Christianity on tribes. (10 M/ 2014)

### **8.2 Tribe and nation state— a comparative study of tribal communities in India and other countries.**

1. Critically evaluate the concept of Nation-State and describe its impact on indigenous societies. (15M/2025)
2. Discuss with appropriate examples how tribal unrest may be understood as emerging out of an incompatibility between tribes and the nation-state. (20 M/2019)
3. Critically evaluate the term tribe, as compared to the term indigenous in some other countries. (20 M/2017)
4. Critically compare 'Affirmative Action' of the USA and 'Protective Discrimination' for Scheduled Tribes in India. (15 M/ 2015)

**9.1 History of administration of tribal areas, tribal policies, plans, programmes of tribal development and their implementation. The concept of PTGs (Primitive Tribal Groups), their distribution, special programmes for their development. Role of N.G.O.s in tribal development.**

1. What are the identifying criteria for PVTGs in India? Examine their current status, nomenclature and distribution. (15M/2025)
2. Discuss the role of NGOs in the socioeconomic and political development of weaker sections and the manner in which they facilitate other stakeholders. (15M/2025)
3. Verrier Elwin's philosophy with respect to Arunachal Pradesh (10M/2025)
4. Critically discuss the recent welfare measures initiated by the Government for the Particularly Vulnerable Tribal Groups (PVTGs). Comment why PVTGs were erroneously called Primitive Tribal Groups (PTGs). (20M/2024)
5. Elucidate the shifting terrains of India's tribal policies in colonial post-colonial periods. (20M/2023)
6. Elucidate the problems faced by Particularly Vulnerable Tribal Groups and the major challenges in the formulation of special programmes for their development. (20M/2023)
7. Discuss the objectives of Integrated Tribal Development Projects (ITDPs). How far have these objectives been achieved? (20M/2022)
8. Discuss the views of G.S. Ghurye and Verrier Elwin on the approach towards tribal populations. What are the policies of the Government of India towards Indian tribal populations? (20M/2022)
9. Compare the functioning of the traditional 'Tribal Council' with that of 'Gram Sabha' under PESA. (15M/2022)
10. Explain how British policies impacted the major resources of the tribals. (15M/2022)
11. Discuss the views of G. S. Ghurye and Verrier Elwin on the approach towards tribal populations. What are the policies of the Government of India towards Indian tribal populations? (20M/2022)
12. Discuss the intervention of Non-Governmental Organizations for empowering tribal women. (15M/2021)
13. Critically discuss the role of N.G.O.s in tribal development. (15M/2019)
14. Write short notes on particularly vulnerable tribal groups (PTG). (10M/2017)
15. Discuss the emergence, salient features, and limitations of tribal sub-plan. (15M/2017)
16. Critically examine the role of NGOs and missionaries in transformation of Scheduled Tribes in central India. (15M/2016)

17. Identify some special programmes for PVTGs. (15M/2016)
18. Elwin-Ghurye debate on Tribes. (10M/2015)
19. Relevance of tribal Panchsheel today. (10M/2015)
20. Recently NGOs have been critiqued for interfering with the developmental process in the tribal heartland. Critically comment. (20M/2015)
21. Critically examine the role of NGOs in promoting health & education in tribal areas. (15M/2014)
22. Describe the history of administration in the colonial period. (15M/2014)
23. Critically evaluate the National Tribal Policy. (15M/2014)
24. The concept of PTG. (10M/2014)
25. Government Action towards Left Wing Extremism. (10M/2013)
26. Role of Gramasabha under PESA. (10M/2013)
27. Fifth Schedule and Sixth Schedule of the Constitution are built on the foundations laid by the colonial Government. Discuss. (20M/2013)
28. Discuss the significance of cultural and administrative factors in tribal development. (15M/2013)
29. Discuss the criticism leveled against anthropology in the context of the 'Isolation and assimilation debate' on tribal populations. (20M/2013)
30. Discuss how British policies dispossessed tribals of their communal properties and agricultural lands. (15M/2013)

## 9.2 Role of anthropology in tribal and rural development.

1. Elucidate the role of anthropology in nation-building. Illustrate with suitable examples. (15M/2023)
2. Briefly describe the anthropological perspective on development. How have anthropologists contributed to India's rural development? (15M/2022)
3. Examine the strengths and weaknesses of anthropology in the context of its role in tribal and rural development. (20M/2018)
4. Discuss the role of anthropology in understanding the loss of livelihood of tribal communities due to economic and ecological factors. (15M/2017)
5. Describe how anthropological knowledge and methods are useful in rural development. (15M/2016)
6. Examine in detail the role of anthropology in planning for tribal development. (15M/2015)
7. Critically assess the role of anthropologists in rural development. (20M/2014)

### 9.3 Contributions of anthropology to the understanding of regionalism, communalism and ethnic and political movements.

1. Elucidate the difference between secularism, religiosity, religious fundamentalism, and spiritualism from an anthropological perspective. (15M/ 2024)
2. Distinguish a "Theocratic State" from a secular, liberal, democratic state. Illustrate your answer with examples from tribal and contemporary societies. (15M/ 2024)
3. Elucidate the resurgence of ethno-nationalism from an anthropological lens. (15M/ 2024)
4. Discuss the regionalism and demand for autonomy in India from an anthropological perspective with respect to Kashmir/Nagaland/Bodoland/Gorkhaland agitation. (20M/ 2020)
5. Anthropological understanding of communalism. (10M/ 2019)
6. Anthropological interpretation of ethnic and political movements. (10M/ 2016)
7. Critically examine the concept of communalism and its relevance for the multi-religious and multi-ethnic polity of India. (20M/ 2015)

**VAID'S ICS DELHI**  
*Since 1985*